

Renewing rear wheel bearings & sealing rings

Spray castle nuts with penetrating oil several times over a course of a few days and let it to break loose surface tension rust and corrosion.

Jack up and support vehicle

Remove tire

Remove cotter pin

Replace tire and lower the car to ground

Apply hand brake and car in Neutral

Loosen up castle nut with 36mm socket and long handlebar

Jack up and support vehicle again and release hand brake

Remove tire, castle nut and drum brake

Heat the hub for about 15 minutes. Rotate hub as your heating it.

Pull off driving flange/hub with extractor

Detach output shaft / CV shaft from axle shaft and tie it up

Screw on castle nut with notches facing drum brakes, then use soft hammer to drive out axle shaft



Outboard



Inboard

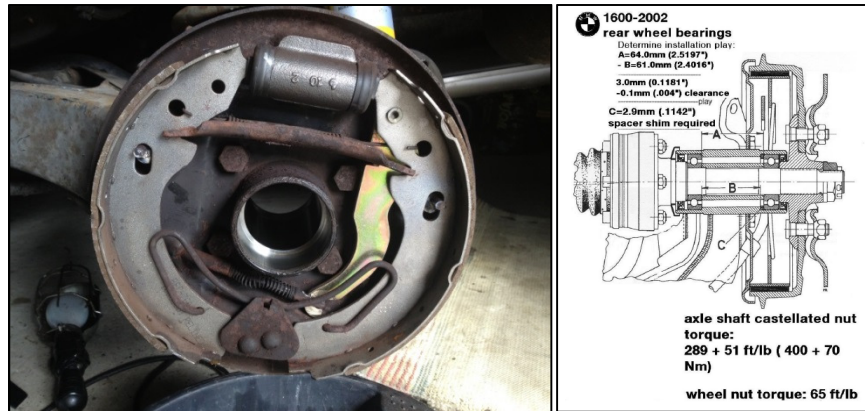


Pry out outboard sealing ring then from inboard side drive out outboard bearing with soft (brass) punch and hammer. Now you can take shim and spacer sleeve out. Now can easily remove inboard sealing ring

and ball bearing. It is important that you keep track of circular shim and spacer sleeve and making sure to not mix them with other side.



Wipe inside with paper towels and spray inside with brake cleaner.



Here are new bearings and seals



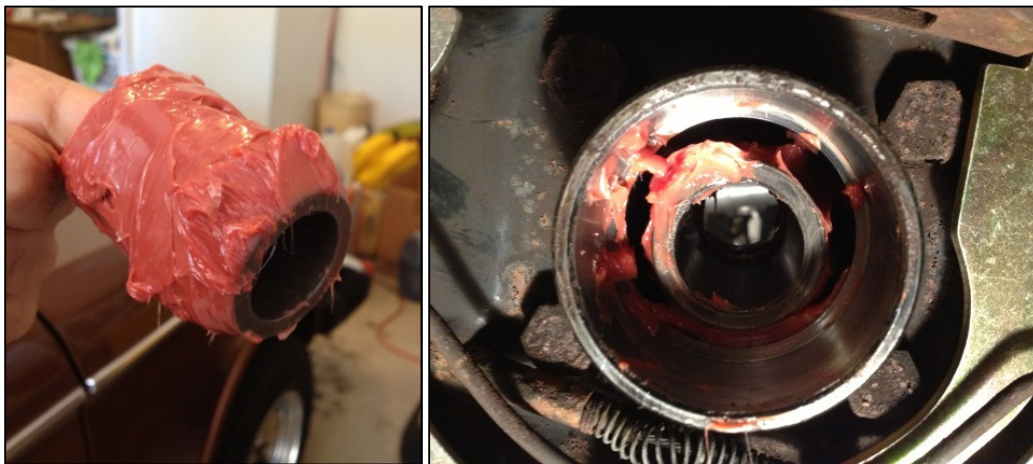


Next, Pack bearings with grease and grease sealing ring lip

Install inboard bearing. I used 1-1/2" dia. PVC coupling and plug to drive bearing in



Coat sleeve spacer outside with 35 grams grease and then insert sleeve to the cavity from outboard side.



Insert shim ring then, insert and drive outboard bearing against shim



Install inboard and outboard seals
 Insert axle shaft all the way in from inboard side
 Install hub/ driving flange
 Tighten castle nut with 36mm socket
 Replace brake drum
 Install tire and lug nuts
 Put rear wheels on ground
 Apply hand brake
 Secure front and back of rear tire with like bricks from rotational movement
 Tighten castle nut to specified torque



And for last time Jack up and support vehicle
 Remove tire
 Install cotter pin and bend tabs
 Put tire back on and tighten lug nuts
 Lower the car and torque lug nuts to 65 ft/lb